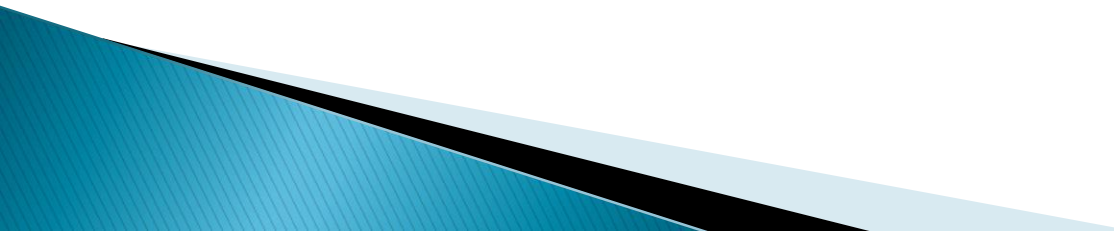


ALWTRT Final Rule & State Rulemaking



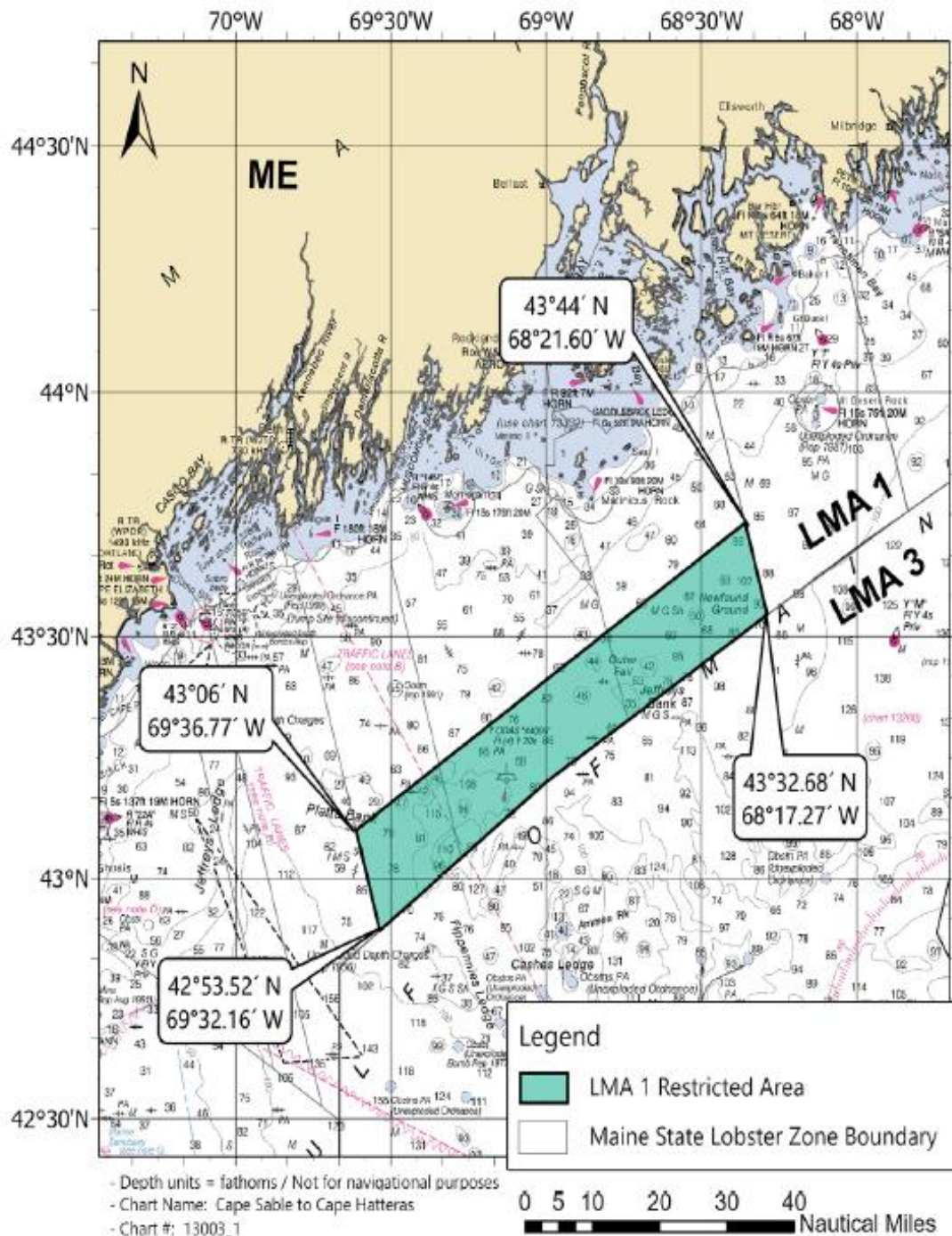
www.maine.gov/dmr

Elements of Final Whale Rule

- ▶ LMA 1 restricted area
 - ▶ Trawling-up
 - ▶ Gear marking
 - ▶ Weak points
-
- ▶ ME DMR will need to incorporate these measures into our regulations
- 

LMA 1 Restricted Area

Source: GARFO



Trawling-Up

ZONE	EXEMPT WATERS TO 3 NM	3 TO 6* NM	6* TO 12 NM	BEYOND 12 NM
Zone A East	3 for 1 line	10 for 1 line 20 for 2 lines	10 for 1 line 20 for 2 lines	25 for 2 lines
Zone A West	3 for 1 line	4 for 1 line 8 for 2 lines	8 for 1 line 15 for 2 lines	25 for 2 lines
Zone B	3 for 1 line	5 for 1 line	5 for 1 line 10 for 2 lines	25 for 2 lines
Zone C	2 for 1 line 4 for 2 lines	5 for 1 line 10 for 2 lines	10 for 1 line 20 for 2 lines	25 for 2 lines
Zone D	2 for 1 line 4 for 2 lines	5 for 1 line 10 for 2 lines	5 for 1 line 10 for 2 lines	25 for 2 lines
Zone E	2 for 1 line 4 for 2 lines	5 for 1 line 10 for 2 lines	5 for 1 line 10 for 2 lines	25 for 2 lines
Zone F	3 for 1 line	5 for 1 line 10 for 2 lines	5 for 1 line 10 for 2 lines	25 for 2 lines
Zone G	3 for 1 line	5 for 1 line 10 for 2 lines	10 for 1 line 20 for 2 lines	25 for 2 lines

*Note that the 6 nm line refers to an approximation, described in 50 CFR 229.32 (a)(2)(ii).

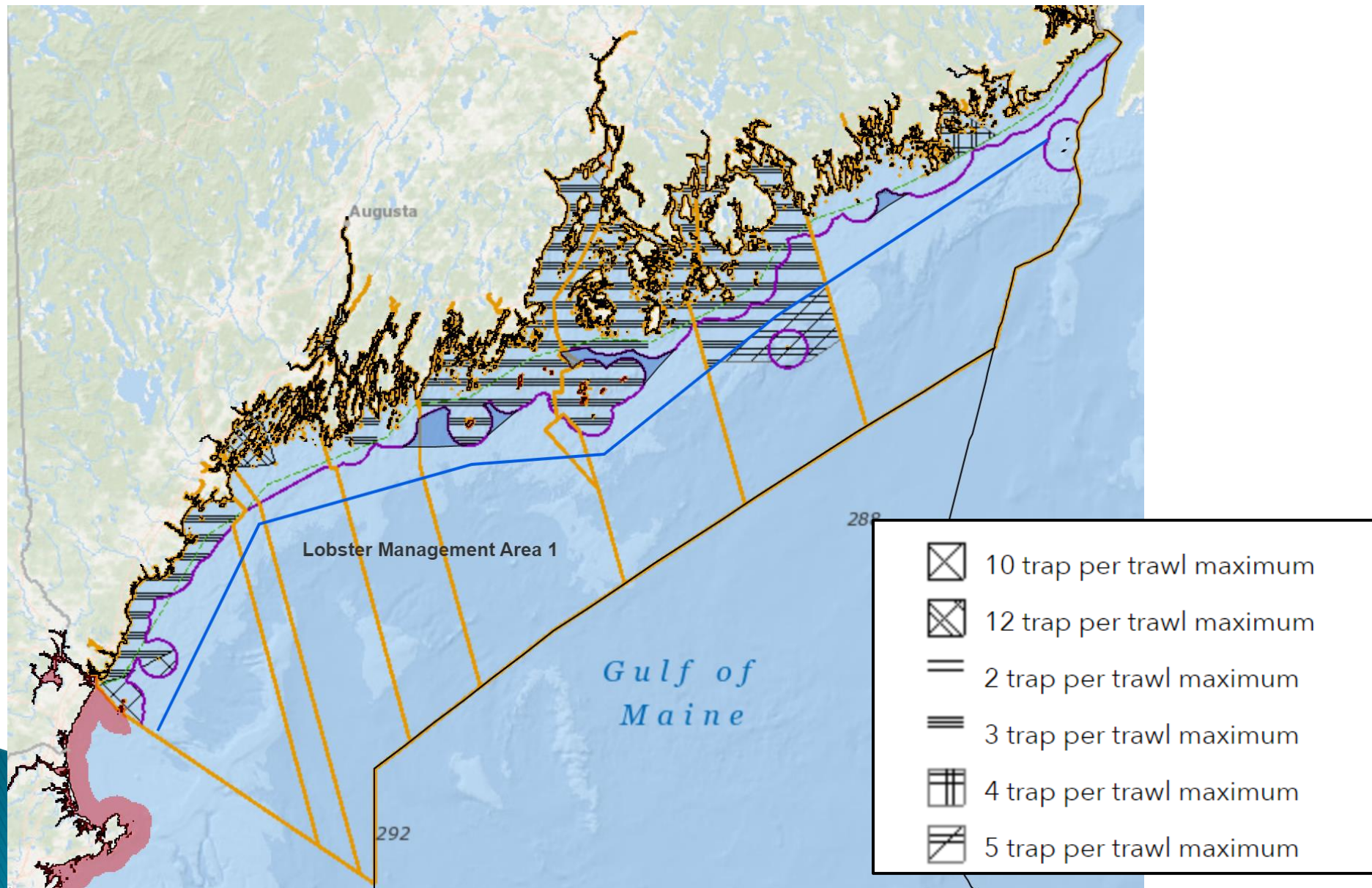
Trawling-Up: Minimums

Management Area	Minimum Number of Traps Per Trawl
Zones A-G (Exemption Line to the 3-mile line)	2 (no singles allowed)
Maine Pocket Waters as defined in Chapter 75.01 (A)(7)*	2 (no singles allowed)
Zones A-G (3-mile line – 6-mile line)*	3
Zones A-C (6-mile line – 12-mile line)*	5
Zones D-G (6-mile line – 12-mile line)*	10
Zones A-E (beyond 12 mile-line)	15
Zones F-G (beyond 12 mile-line)	15 (Mar 1-Oct 31) 20 (Nov 1-Feb 28/29)

Exception: Waters within $\frac{1}{4}$ mile of Monhegan Island, Matinicus Island and Ragged Island (Criehaven) are exempt from the new minimum trap per trawl requirements. Single traps are permitted within $\frac{1}{4}$ mile from these three islands.

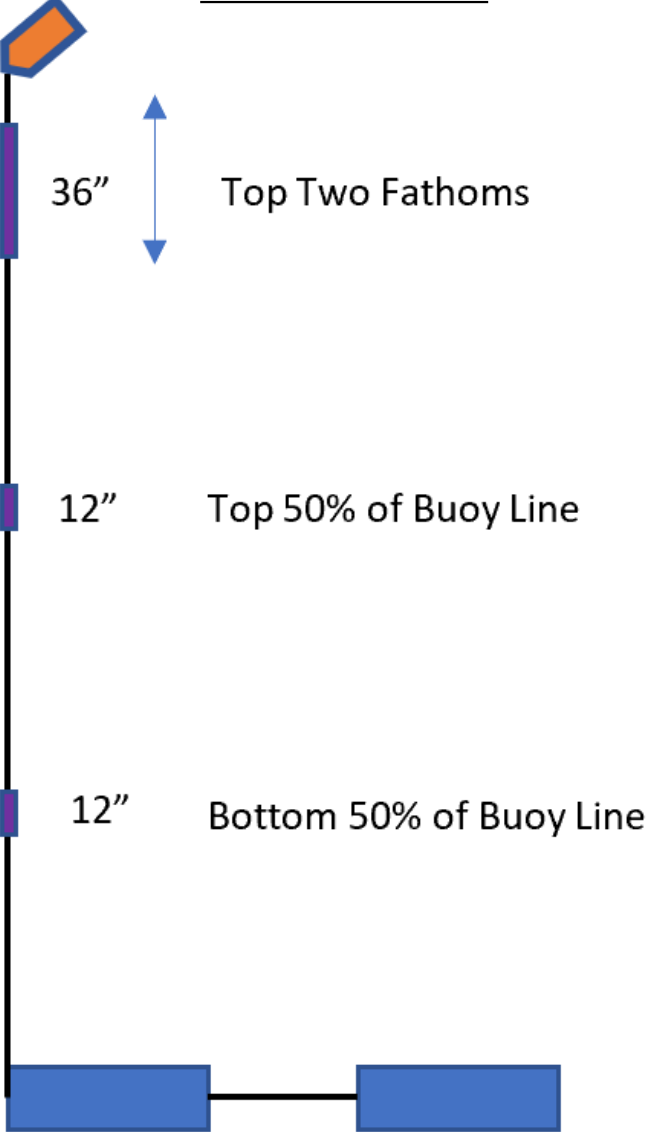
Most of these trawl minimums will have to be updated in state rulemaking (Chapter 75)

Trawling-Up: Maximums

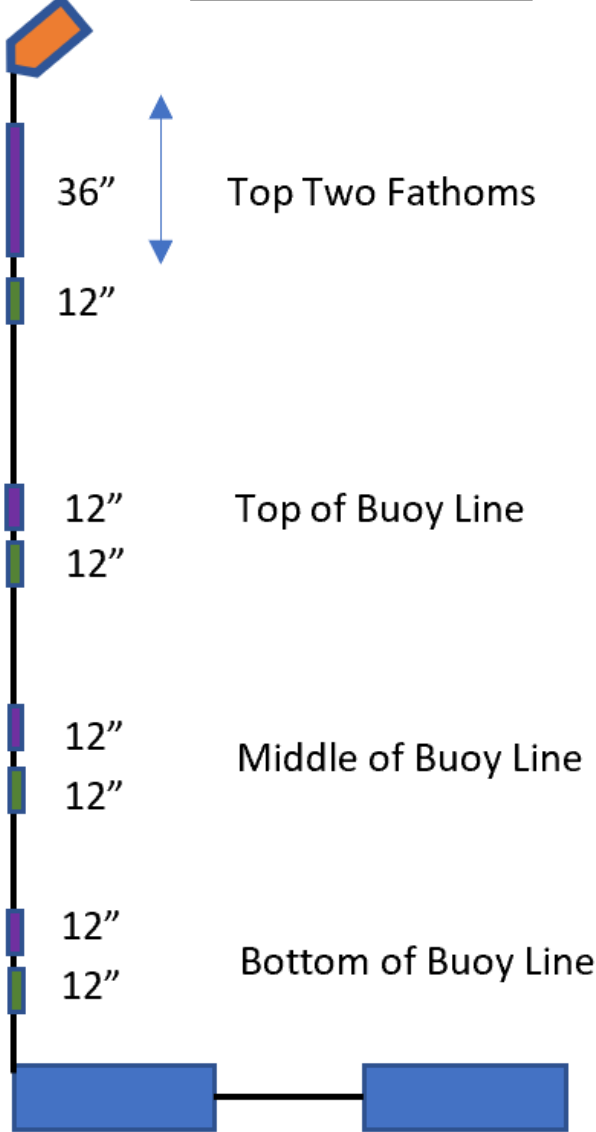


Gear Marking

State Waters



Federal Waters



Gear Marking – State Regs

▶ Exempt Waters

- No changes from current regs
- Will maintain exemption for buoy lines less than 100ft – just one 36” purple mark and one 12” purple mark

▶ Sliver Area

- No green marks
- Three purple marks instead of four
- NOAA did not establish exemption for buoy lines less than 100ft

▶ Federal Waters

- Green marks are 12” and next to each of the four purple marks

Weak Points

▶ State Waters

- 1 weak point 50% down line or top 50% of buoy line weak rope

▶ 3–12nm

- Zones A West, B, C, D, E: 2 weak points 25% and 50% down the line or top 50% of buoy line weak rope

- Zones A East, F, G: 1 weak insert 33% down the line

▶ Outside 12nm

- 1 weak insert 33% down the line

Weak Points: Sliver & Federal Waters

- ▶ Weak inserts must be chosen from NMFS–approved list: [fisheries.noaa.gov/ALWTRP](https://www.fisheries.noaa.gov/ALWTRP)
- ▶ Waiting on verdict of weak point options ME DMR submitted

EXAMPLES OF WEAK INSERT RIGGING METHODS

OTHER INSERTIONS (can be used with any rope)



South Shore Sleeve

This red sleeve is manufactured by Novabraid.



1,700 lb breaking strength link insert/buoy breakaway

INSERTIONS WITH WEAK ROPE



Butt/End/Short Splice



Lazy 4-Tuck Splice



Lazy 3-Tuck Splice



Eye Loop Splice, 3 Tucks

APPROVED MANUFACTURED WEAK ROPE

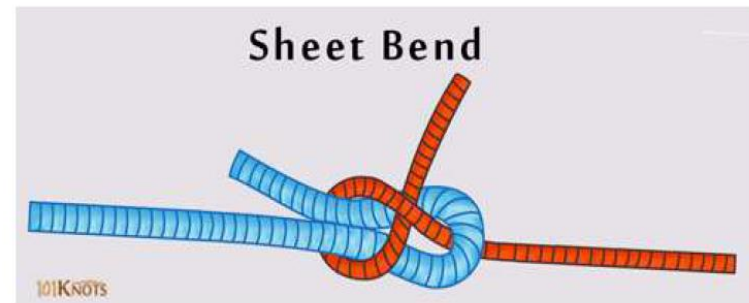
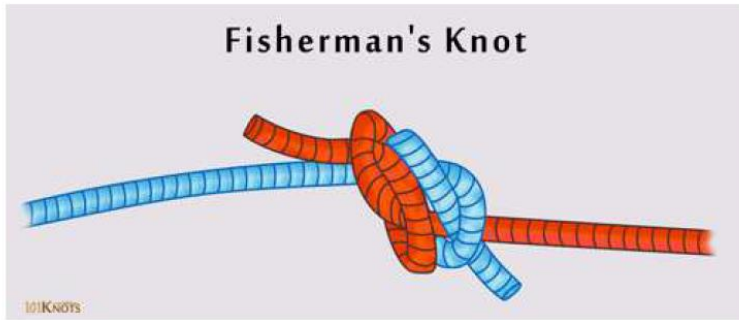
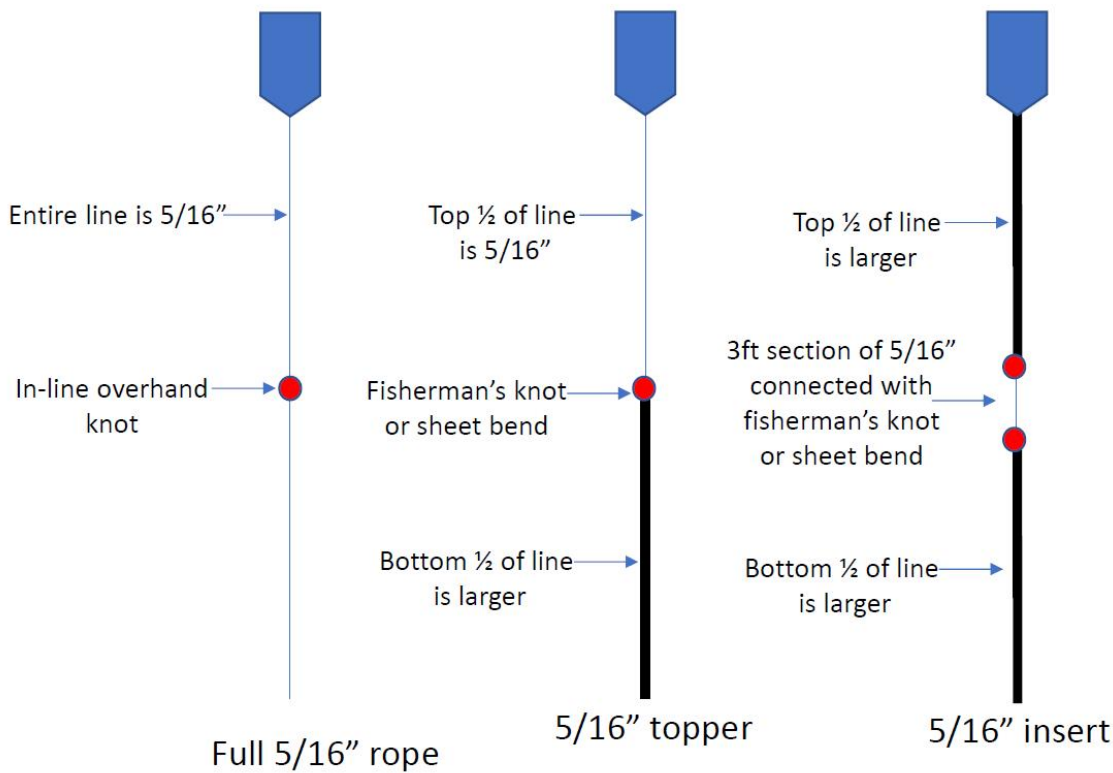
Rocky Mount Red (3/8" diameter) and Candy Cane (3/8" diameter)

Neocorp 3/8" diameter polyester rope (1021)

NOTE: All weak inserts must be at least 3 feet in length.

The red rope in these pictures is weak rope manufactured by Rocky Mount Cord Company.

Add'l Exemption Area Options



Questions?

